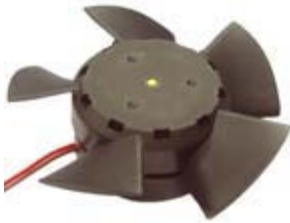




Dia.108x36mm/4.3inch , 125~60CFM

TDK10836

General specification



- Motor: Brushless DC, auto cutoff, auto restart, locking and polarity protected motor
- Motor Case: Glass fiber reinforced PBT thermoplastic, UL94V-0
- Impeller: Glass fiber reinforced PBT thermoplastic, UL94V-0 impeller
- Rotation: CCW looking at of rotor, air inlet side of housing
- Bearing System: Double sealed high precision ball bearing
- Operating Temp: Ball bearings -20C ~ +70C
- L10 Life: Ball bearings 65,000 hours at 45C, 50,000 hours at 65C
- Dielectric Strength: 500 VAC/sec. Max leakage 500 micro amp
- Connection: Wire leads connecting AWG22, 350~380mm, stripped ends 3~5mm
- Net Weight: 170g (0.37Lbs)



Model	Rated Voltage	Voltage Range	Input Power	Rated Current	Referenced Speed	Max Airflow	Max Pressure	Noise
	VDC	VDC	W	A	RPM	CFM	Inch/H2O	dB
TDK10836-H-12	12	8~13.8	6.0	0.50	3100	100	0.28	42
TDK10836-M-12	12	8~13.8	4.8	0.40	2500	78	0.21	33
TDK10836-L-12	12	10~14	2.4	0.20	2000	65	0.13	26
TDK10836-H-24	24	15~26	5.5	0.23	3200	105	0.28	42
TDK10836-M-24	24	18~27	4.6	0.19	2550	82	0.21	33
TDK10836-L-24	24	18~27.6	3.6	0.15	2000	65	0.13	26
TDK10836-H-48	48	28~55	5.5	0.10	3200	105	0.28	42
TDK10836-M-48	48	28~55.2	4.6	0.08	2550	82	0.21	33
TDK10836-L-48	48	30~56	3.6	0.07	2000	65	0.13	26

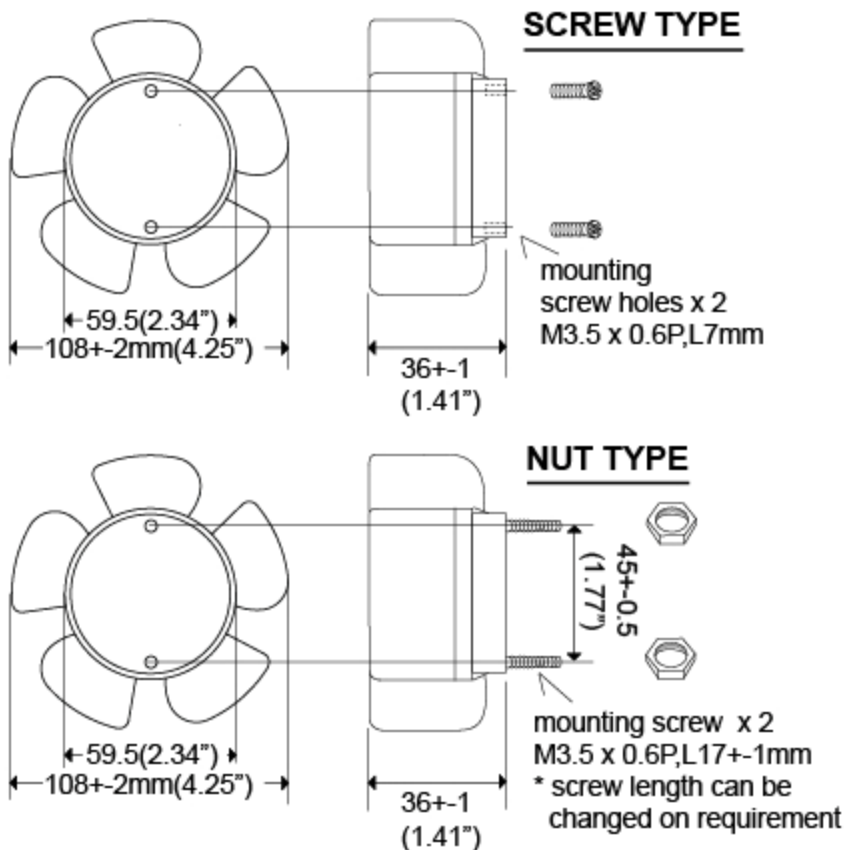
Related Technical Information

-Optional Function Leads:

- *Alarm, motor stop, cutoff sensor signals (L, run-Low, stop-High for alarm function, color yellow lead)
- *Tach speed sensor output, open collector, 2 square waves per revolution, or TTL 4.4~5 VDC optional (T, white lead)
- *Speed control:
 - 1.H, NTC thermistor thermal control 1800~3400RPM/4.7~10K ohm vs 45~20C(H,orange lead)
 - 2.P, Pulse Width Modulation, microprocessor programmable CPU speed control,10~100%, full stop & 10 speed stages; 800~3800RPM (P, purple lead)
 - 3.V, Control voltage speed setting, Analog 0~10V vs speed RPM speed control via separate DC low voltage interface (V, gray lead)

Fan Performance Curve and Dimension

Dimensions: AxBxCxD: Dia.108x36mm/4.3inch



* TEI reserves the right to change data and specs without notice* Tests are at nominal voltage against zero static pressure* Specification subject to change without notice, data tolerance +/-10%